

Moticam X Wi-Fi

WI-FI CAMERAS

A unique solution to turn your old microscope into a Wi-Fi station, enabled to share your images with up to 6 devices at the same time. Simply logon with your tablet or smartphone and get ready to capture, edit and store your microscope images with the free App MotiConnect.

The Moticam X is equipped with its own on-board software, that can be easily controlled with a Web Browser which allows you to capture as well as measure (in case you are not allowed to download Apps). Alternatively, it also works with our standard Motic Images Plus Software for computers.

www.moticamseries.com | www.moticeurope.com

STREAMING WI-FI CAMERA





Moticam X TECHNICAL SPECIFICATIONS

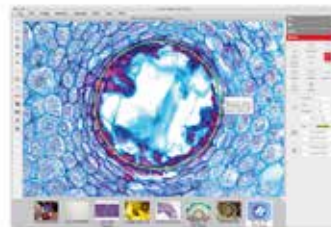
Sensor Type	CMOS
Sensor Size	1/3.2"
Resolution	1.3 MP
Imaging Area	4.48mm x 3.36mm
Live Display Mode (through USB)	1280 x 960 (Wi-Fi only)
Pixel Size	2.8µm x 2.8µm
Scan Mode	Progressive
Data Transfer	Wi-Fi
Exposure Time	0,05 msec to 0,07 sec
Operating Temperature	From -10 to +60 Degrees Celsius non condensing
Max. Signal to Noise Ratio	42dB
Dynamic Range	68dB
Sensitivity	1,0V/Lux-sec (550nm)
Support Device	Universal Web browser (HTML5)
Supported OS	Microsoft Windows XP/Vista/7/8/MAC OSX/Android 4,0 or higher/ iOS7 or higher
Minimum Computer Requirements	2GHz dualcore – RAM memory 2GB – Video memory min. 512 MB
Lens Mount	C-Mount
Focusable Lens	12mm
Power supply	5V (USB - supply)
Package Includes	CS Ring Adaptor, Focusable Lens, 30mm and 38mm Eyepiece Adapters, USB 2.0 Cable, Calibration Slide, Macro Tube, Motic Images Plus 3.0 for PC/OSX/Linux

**frames per second
under optimal illumination conditions*

MOTIC IMAGES PLUS 3.0 IMAGE ANALYSIS SOFTWARE

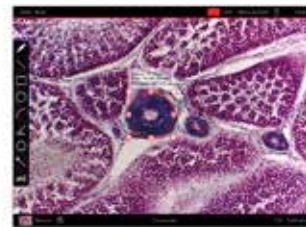
Motic Images Plus 3.0

By connecting your Moticam to your computer you will be able to work with our well-known software, that comes included in the package. View, capture, edit, measure, make reports... all its standard features and the new ones packed in a new user-friendly interface.



THE [AllinOneBOX] CONCEPT

Everything that you may need to work with your Moticam is included in one box



MotiConnect App

View, edit, capture and store your images in the blink of an eye, view live images on multiple wireless devices and share your work with anyone in just a few clicks. The MotiConnect App makes data sharing possible in a collaborative environment, encouraging teamwork and collective learning experiences.

